

Phonomax Systems

GX Series Program Manual

Enter Programming Mode

Programming can be done by programming enabled extensions only. All extensions can do programming in Default setting. The programming capability can be programmed by Code-141

Password Entry

#*1234

Listen Program Dial Tone (Intermittent Break in Tone)

In Presence of Program Dial Tone programmer can enter Program Code. Once the program code is entered Programmer gets acceptance beep for valid Code.

The parameters for that program code are to be entered once the acceptance beep is given, once parameter is entered and programming can be done for entered code, programmer will get program dial tone for doing the next program.

When wrong Program Entry or Program Code or Parameter is entered engage tone is heard and programmer need to do flash to get program dial tone and no need to re-enter programming password.

EPort is Physical port number as per slot of the System (100-291) and EFlexi is flexible number assigned to extension port.

T is Trunk Port of the System is 1 to 8, as per trunk card attached to the system.

RG is Ringing Group 1 to 6.

EFlexi is Flexible number assigned to EPort or CPort or RGroup or Feature Code

EFlexi can be assigned to all Extensions, all Trunks, both Trunk groups, Redial, Call Pick-up, Panic, all Ringing groups access codes.

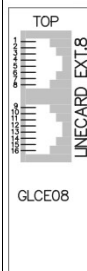
EFlexi can be 1 to 6 digits all numeric with mixture also. If 10 is assigned 10nn... cannot be assigned. EFlexi starting * cannot be assigned to Extension or Trunk. EFlexi cannot be assigned to any EPort/CPort where Slot is empty.

Slot	Port
Slot-01	100 - 115
Slot-02	116 - 131
Slot-03	132 - 147
Slot-04	148 - 163
Slot-05	164 - 179
Slot-06	180 - 195
Slot-07	196 - 211
Slot-08	212 - 227
Slot-09	228 - 243
Slot-10	244 - 259
Slot-11	260 - 275
Slot-12	276 - 291

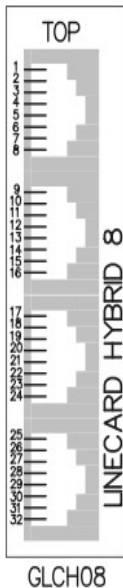
Pins	Port
1-2	EXT-1
3-4	EXT-2
5-6	EXT-3
7-8	EXT-4
9-10	EXT-5
11-12	EXT-6
13-14	LINE-1
15-16	LINE-2



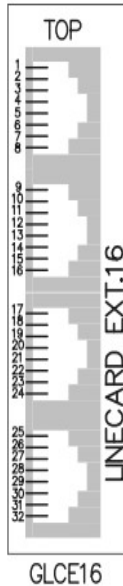
Pins	Port
1-2	EXT-1
3-4	EXT-2
5-6	EXT-3
7-8	EXT-4
9-10	EXT-5
11-12	EXT-6
13-14	EXT-7
15-16	EXT-8



Pins	Port
4-5	EXT-1
3-6	EXT-2
2-7	DATA-1
1-8	DATA-2
12-13	EXT-3
11-14	EXT-4
10-15	DATA-3
9-16	DATA-4
20-21	EXT-5
19-22	EXT-6
18-23	DATA-5
17-24	DATA-6
28-29	EXT-7
27-30	EXT-8
26-31	DATA-7
25-32	DATA-9



Pins	Port
1-2	EXT-1
3-4	EXT-2
5-6	EXT-3
7-8	EXT-4
9-10	EXT-5
11-12	EXT-6
13-14	EXT-7
15-16	EXT-8
17-18	EXT-9
19-20	EXT-10
21-22	EXT-11
23-24	EXT-12
25-26	EXT-13
27-28	EXT-14
29-30	EXT-15
31-32	EXT-16



Program Codes

Date and Time Program

Program Dial Tone + 00 -- Acceptance Beep

Dial YY+MM + DD --Acceptance Beep

+HH+MN -- Program Dial Tone

Where,

YY = Year 00-99

MM= Month 01-12 for Jan to Dec

DD =Day 01-31 (Date)

HH =Hours 00-23

MN =Minutes 00-59

(Default Programmed for Date / Time)

Global Memory Program

Program Dial Tone + 01 -- Acceptance Beep

Dial * --Program Dial Tone (Reset Entire Memory)

Dial MM + T + NNNNNNNN....+ Flash--

Program Dial Tone

Dial MM + * -- Program Dial Tone (Reset Memory Location @ MM)

Where,

MM = Memory Location

NN = Telephone Number up to 30 digits

T = 0/9 is for group-1/2 respectively

T = 1-8 is Direct Access Code as per trunk available

(Default Not Programmed)

System Password Change

Program Dial Tone + 02 -- Acceptance Beep

Dial PPPP+# -- Program Dial Tone

Where,

PPPP = New Program Password

(Default 1234)

Note: The new password can be any permutation of numerical number only and it cannot have * or #.

Day / Night Mode Automatic Timings

Program Dial Tone + 05 -- Acceptance Beep

Dial D (0-7) +HH+MN+HH+MN -- Program

Dial Tone

Where,

D = Day of the week 1-7 for Sunday to Saturday

D = 0 All days same time

HH =Hours 00-23

MN =Minutes 00-59

(Default Not Programmed)

Day / Night Mode Automatic Activation

Program Dial Tone + 06 -- Acceptance Beep

Dial D + 1 / 0 -- Program Dial Tone

Where,

D = 0 All Days

D = 1-7 for Sunday, Monday..... Saturday

1 = Enable Day / Night Mode Automatic Switching
0 = Disable Day / Night Mode Automatic Switching
(Default Not Programmed)

Ports Flexi Number Auto Assignment

Program Dial Tone + 07 -- Acceptance Beep
Dial 0/1/2/3 -- Program Dial Tone

Where,

0 = No Numbers are assigned, Factory default

1 = Extension are 10, 11, 12...up to 59 of present Extensions

Trunk Direct Access Code is 61, 62...up to 68 for Present Trunk Lines

2 = Extension are 20, 21, 22...up to 69 of present Extensions

Trunk Direct Access Code is 11, 12...up to 18 for Present Trunk Lines

3 = Extension are 100, 101, 102...up to present all Extensions

Trunk Direct Access Code is 61, 62...up to 68 for Present Trunk Lines

Note: For 1/2/3 --> Redial is *, Trunk Group-1 is 0, Call Pick-up is 8, Ring Group-1 is 7 with first four Extensions.

(Default No Numbers are assigned)

Ports EFlexi Reset

Program Dial Tone + 08 -- Acceptance Beep

Dial EFlexi -- Program Dial Tone

With this EFlexi assigned to any port or

Feature Access code will get erased.

Extension Flexi Number Assignment

Program Dial Tone + 09 -- Acceptance Beep

Dial EPort + EFlexi -- Program Dial Tone

Dial EPort + # (Erase number assigned to

EPort) -- Program Dial Tone

EFlexi can be 1 to 6 digits, when digits are less than 6 dial # to assign

(Default check program code-07)

Extension Port Group Assign

Program Dial Tone + 10 -- Acceptance Beep

Dial G + ** for all EPort -- Program Dial Tone

Dial G + *EPort or EFlexi + *EPort or EFlexi +... -- Acceptance Beep or Flash to exit

Where,

*EPort is physical port

** is all extension

EFlexi is flexible number assigned to extension

G is 1-8 group number for that extension

(Default all EPort Group-1)

Group Extension to Extension Call Receiving Activation

This feature used when internal dialling within flats is barred and dialling to Security and office bearers flats is required from all extensions in housing society and same can be applicable for room to room call barring in Hotel. In this case office bearers and security extensions are placed in other group from normal extensions and their group is allowed for receiving calls by this program.

Program Dial Tone + 111 -- Acceptance Beep
Dial G + 0/1 -- Program Dial Tone

Where,

G is 0 all groups

G is 1-8 group number for that extensions

0 is disable for receiving calls

1 is enable for receiving calls

(Default all Group Enable)

Group Extension to Extension Call Dialling Activation

This feature used when internal dialling within flats is barred from certain group of extensions. In this case this groups are programmed for not dialling internally while they can still contact office bearers and security with Extension to Extension Call receiving program.

Program Dial Tone + 112 -- Acceptance Beep

Dial G + 0/1 -- Program Dial Tone

Where,

G is 0 all groups

G is 1-8 group number for that extensions

0 is disable for dialling calls

1 is enable for dialling calls

(Default all Group Enable)

Group Paging Activation

GX System is equipped with one paging (analogue out) port which can be connected to amplifier speaker system to broadcast messages. This feature can be activated for particular group of extensions only to avoid misuse.

Program Dial Tone + 115 -- Acceptance Beep

Dial G + 0/1 -- Program Dial Tone

Where,

G is 0 all groups

G is 1-8 group number for that extensions

0 is disable paging for the Group.

1 is enable paging for the Group.

(Default all Group Enable)

Group Do Not Disturb Override Activation

When any extension activates Do Not Disturb feature, calls cannot be made to that extension by other extensions. But this can be overridden with this program for group of extensions of Office Bearers, Service Extensions and Security Extensions. This is activated on level based, upper level group extensions can override lower level group extensions but vice versa override is not allowed.

Program Dial Tone + 116 -- Acceptance Beep
Dial G + 0/1/2/3 -- Program Dial Tone

Where,

G is 0 all groups

G is 1-8 group number for that extensions

0/1/2/3 is Level for that group of extensions.

(Default all Group Disable)

Extension Ring Switch Program

Program Dial Tone + 131 -- Acceptance Beep
Dial *EPort / ** / EFlexi + R -- Program Dial
Tone

Where,

EPort = Extension Port Number

** = All Extensions

EFlexi = Extension Flexible Number

R = 3 to 9, this used in Sequential Mode for Ring Shift Count to Next Extension.
(Default 6 Rings)

Extension Barge-in Level Program

Program Dial Tone + 132 -- Acceptance Beep
Dial *EPort / ** / EFlexi + L (Level) --
Program Dial Tone

Where,

EPort = Extension Port Number

** = All Extensions

EFlexi = Extension Flexible Number

L = 0 Barge-in not Allowed

L = 1 Barge-in with Tone

L = 2 Barge-in without Tone

(Default All to Level-1)

Extension Time-out (Auto call Disconnection)

Program Dial Tone + 133 -- Acceptance Beep
Dial *EPort / ** / EFlexi + 0/1 -- Program
Dial Tone

Where,

EPort = Extension Port Number

** = All Extensions

EFlexi = Extension Flexible Number

0 = No Disconnection

1 = Auto Disconnection as per Timing in 169

(Default No Disconnection)

Extension DISA Receive Day

Program Dial Tone + 134 -- Acceptance Beep
Dial *EPort / ** / EFlexi + 0/1 -- Program
Dial Tone

Where,

EPort = Extension Port Number

** = All Extensions

EFlexi = Extension Flexible Number

0 = DISA Receive Disable

1 = DISA Receive Enable

(Default All Enabled)

Extension DISA Receive Night

Program Dial Tone + 135 -- Acceptance Beep
Dial *EPort / ** / EFlexi + 0/1 -- Program
Dial Tone

Same as Day Mode Setting

Extension Call Forward Enable

Program Dial Tone + 136 -- Acceptance Beep
Dial *EPort / ** / EFlexi + 0/1 -- Program
Dial Tone

Where,

EPort = Extension Port Number

** = All Extensions

EFlexi = Extension Flexible Number

0 = Call Forward Disable

1 = Call Forward Enable

(Default All Disabled)

Extension Forward on Busy Allow

Program Dial Tone + 137 -- Acceptance Beep
Dial *EPort / ** / EFlexi + 0/1 -- Program
Dial Tone

Where,

EPort = Extension Port Number

** = All Extensions

EFlexi = Extension Flexible Number

0 = Call Forward on Busy Disable

1 = Call Forward on Busy Enable

(Default All Disabled)

Extension Follow-me Enable

Program Dial Tone + 138 -- Acceptance Beep
Dial *EPort / ** / EFlexi + 0/1 -- Program
Dial Tone

Where,

EPort = Extension Port Number

** = All Extensions

EFlexi = Extension Flexible Number

0 = Follow-me Disable

1 = Follow-me Enable

(Default All Disabled)

Extension Follow-me with Password Enable

Program Dial Tone + 139 -- Acceptance Beep
Dial *EPort / ** / EFlexi + 0/1 -- Program
Dial Tone

Where,

EPort = Extension Port Number

** = All Extensions

EFlexi = Extension Flexible Number

0 = Follow-me with Password Disable

1 = Follow-me with Password Enable

(Default All Disabled)

Extension Program Facility Activation

Program Dial Tone + 141 -- Acceptance Beep

Dial *EPort / ** / EFlexi + 0/1 -- Program

Dial Tone

Where,

EPort = Extension Port Number

** = All Extensions

EFlexi = Extension Flexible Number

0 = Programming Facility Disable

1 = Programming Facility Enable

(Default All Enabled)

Extension Default Code Access Enable

Program Dial Tone + 142 -- Acceptance Beep

Dial *EPort / ** / EFlexi + 0/1 -- Program

Dial Tone

Where,

EPort = Extension Port Number

** = All Extensions

EFlexi = Extension Flexible Number

0 = Default Code Access Disable

1 = Default Code Access Enable
(Default All Enabled)

Extension Caller ID Activation Program

Program Dial Tone + 143 -- Acceptance Beep
Dial *EPort / ** / EFlexi + 0/1 -- Program
Dial Tone

Where,

EPort = Extension Port Number

** = All Extensions

EFlexi = Extension Flexible Number

0 = Caller ID Disable

1 = Caller ID Enable

(Default All Enabled)

Extension for Vendor Registration

Program Dial Tone + 144 -- Acceptance Beep
Dial *EPort / ** / EFlexi + 0/1 -- Program
Dial Tone

Where,

EPort = Extension Port Number

** = All Extensions

EFlexi = Extension Flexible Number

0 = Vendor Registration Disable

1 = Vendor Registration Enable

(Default All Disabled)

Extension for Visitor Confirmation

Program Dial Tone + 145 -- Acceptance Beep

Dial *EPort / ** / EFlexi + 0/1 -- Program

Dial Tone

Where,

EPort = Extension Port Number

** = All Extensions

EFlexi = Extension Flexible Number

0 = Visitor Confirmation Capability Disable

1 = Visitor Confirmation Capability Enable

(Default All Disabled)

Extension Broadcast/Announce

Program Dial Tone + 146 -- Acceptance Beep

Dial *EPort / ** / EFlexi + 0/1 -- Program

Dial Tone

Where,

EPort = Extension Port Number

** = All Extensions

EFlexi = Extension Flexible Number

0 = Broadcast/Announce Capability Disable

1 = Broadcast/Announce Capability Enable

(Default All Disabled)

Extension Remote Alarm Setting

Program Dial Tone + 147 -- Acceptance Beep

Dial *EPort / ** / EFlexi + 0/1 -- Program

Dial Tone

Where,

EPort = Extension Port Number

** = All Extensions

EFlexi = Extension Flexible Number

0 = Remote Alarm Setting Disable

1 = Remote Alarm Setting Enable

(Default All Disabled)

Extension Executive Activation

Program Dial Tone + 148 -- Acceptance Beep

Dial *EPort / ** / EFlexi + 0/1 -- Program

Dial Tone

Where,

EPort = Extension Port Number

** = All Extensions

EFlexi = Extension Flexible Number

0 = Extension Executive Disable

1 = Extension Executive Enable

(Default All Disabled)

Extension Personnel Password Reset

Program Dial Tone + 149 -- Acceptance Beep

Dial *EPort / EFlexi + # -- Program Dial Tone

Where,

EPort = Extension Port Number

EFlexi = Extension Flexible Number

(Default all Extensions Password are Reset)

Caller ID Service Waiting Period Programming

Program Dial Tone + 160 -- Acceptance Beep
Dial 0 to 4 -- Program Dial Tone

Where,

0/1/2/3/4 = 0 Sec/1.7 Sec/3.3 Sec/4.9
Sec/6.5 Sec

Wait for Caller ID from Exchange after which
Call is terminated
(Default 1.7 Seconds)

Trunk DTMF Dial Start Time for Redial / Memory

Program Dial Tone + 161 -- Acceptance Beep
Dial 0-4 -- Program Dial Tone

Where,

0/1/2/3/4 = 200 mSec / 400 mSec / 600
mSec / 800 mSec / 1 Sec

(Default 800 mSEC)

Trunk line Flash Time Program

Program Dial Tone + 162 -- Acceptance Beep
Dial 0-4 -- Program Dial Tone

Where,

0/1/2/3/4 is 320/575/770/900/1100 milli
Seconds respectively.

(Default 770 mSEC)

Hold Recall Time

Program Dial Tone + 163 -- Acceptance Beep
Dial 0-4 -- Program Dial Tone

Where,

0/1/2/3/4 = 16/32/48/64/80 Seconds

(Default 32 Sec)

Transfer Recall Time

Program Dial Tone + 164 -- Acceptance Beep
Dial 0-4 -- Program Dial Tone

Where,

0/1/2/3/4 = 16/24/32/40/48 Seconds

(Default 24 Sec)

Valid Off hook Time while Ring

Program Dial Tone + 165 -- Acceptance Beep
Dial 0-4 -- Program Dial Tone

Where,

0-4 = 100mSec to 500mSec

(Default 200mSec)

Trunk Valid Ring Detect Time

Program Dial Tone + 166 -- Acceptance Beep
Dial 0-4 -- Program Dial Tone

Where,

0-4 = 100mSec - 900mSec

(Default 500 mSec)

Visitor Confirmation Time

Program Dial Tone + 167 -- Acceptance Beep

Dial 1-9 -- Program Dial Tone

Where,

1-9 =

127/143/159/177/195/207/223/239/255 Sec

(Default 127Sec)

SMDR Start Time

Program Dial Tone + 168 -- Acceptance Beep

Dial 0-9 -- Program Dial Tone

Where,

0-9 = Time in Seconds

(Default 5 Sec)

Extension Time Duration (Auto Disconnection)

Program Dial Tone + 169 -- Acceptance Beep

Dial 1-9 -- Program Dial Tone

Where,

1/2/3/4/5/6/7/8/9 =

3/6/9/12/15/18/21/24/27 Minutes

(Time Duration after which Calls will get disconnected)

(Default 27 Min)

DTMF Tone Mute Program

Program Dial Tone + 170 -- Acceptance Beep

Dial 0/1 -- Program Dial Tone

Where,

0/1 = Trunk Dialling Redial/Memory Dial -
Mute Disable / Enable
(Default Enable)

Trunk Round Robin Group-1

Program Dial Tone + 171 -- Acceptance Beep
Dial 1/0 -- Program Dial Tone

Where,

0 = Trunk Dialling Round Robin

1 = Trunk Dialling 1st Line 1st Access

(Default Round Robin)

Trunk Round Robin Group-2

Program Dial Tone + 172 -- Acceptance Beep
Dial 1/0 -- Program Dial Tone

Where,

0 = Trunk Dialling Round Robin

1 = Trunk Dialling 1st Line 1st Access

(Default Round Robin)

No Dial Disconnection (Trunk Line)

Program Dial Tone + 173 -- Acceptance Beep
Dial 1/0 -- Program Dial Tone

Where,

0 = Trunk Dialling No Dial Disconnection
Disable

1 = Trunk Dialling No Dial Disconnection
Enable

(Default Enable)

Flash on Trunk Program

Program Dial Tone + 176 -- Acceptance Beep

Dial 1/0 -- Program Dial Tone

Where,

0 = Flash on Trunk Disable

1 = Flash on Trunk Enable

(Default Disable)

See also,

Trunk line Flash Time Programming (Code-162)

Trunk Line Ring off Detection Time

Program Dial Tone + 179 -- Acceptance Beep

Dial 1-4 -- Program Dial Tone

Where,

1-4 is Time in (3.2/4.8/6.4/8) seconds for

Time out of Ringing Trunk line

(Default 4.8 Seconds)

Add '0' to CLID Number received

Program Dial Tone + 181 -- Acceptance Beep

Dial 0/1 -- Program Dial Tone

Where,

0 = '0' is not added to received CLID number

1 = '0' is added to received CLID number

(Default '0' is added)

Internal CLID 5 Digits Activation Program

Program Dial Tone + 182 -- Acceptance Beep
Dial 0/1 -- Program Dial Tone

Where,

0 = Internal CLID is actual

1 = Internal CLID is five digits with preceding '0'

(Default Five Digits)

Transferred Call re-connect on flash

Program Dial Tone + 186 -- Acceptance Beep
Dial 0-1 -- Program Dial Tone

Where,

0 = Transferred Call re-connect on flash disable

1 = Transferred Call re-connect on flash enable

(Default Disable)

Call connect while Ring Cadence is on

Program Dial Tone + 187 -- Acceptance Beep
Dial 0-1 -- Program Dial Tone

Where,

0 = Call connect while Ring Cadence is on, disable

1 = Call connect while Ring Cadence is on, enable

(Default Disable)

Panic Code Activate

Program Dial Tone + 188 -- Acceptance Beep
Dial 0-1 -- Program Dial Tone

Where,

0 = Panic Code disable

1 = Panic Code enable

(Default Disable)

See also,

Panic Code Number Assign (Code-25)

Locked Extension Class of Service

Program Dial Tone + 189 -- Acceptance Beep
Dial C (0/1/2/3) -- Program Dial Tone

Where,

C = 0 All Allowed

C = 1 Class of Service - 1 Effective (Allowed
All 20/Denied First 10)

C = 2 Class of Service - 2 Effective (Allowed
First 10/Denied All 20)

C = 3 Only Intercom Allowed
(Default All Allowed)

Message Type Definition

Program Dial Tone + 19 -- Acceptance Beep
Dial M + 0/1 -- Program Dial Tone

Where,

M = Message ID 1-5

0 = Message is General Message

1 = Message is Auto-attendant Level-1
Message
(Default all Messages are General Message)

Default Number Assign Trunk Group-1

Program Dial Tone + 20 -- Acceptance Beep
Dial EFlexi (+ #) -- Program Dial Tone
Dial # (Erase number assigned to Trunk
Group-1) -- Program Dial Tone
EFlexi can be 1 to 6 digits, when digits are
less than 6 dial # to assign
(Default check program code-07)

Default Number Assign Trunk 1-8

Program Dial Tone + 21+T -- Acceptance
Beep
Dial EFlexi (+ #) -- Program Dial Tone
Dial # (Erase number assigned to Trunk) --
Program Dial Tone
EFlexi can be 1 to 6 digits, when digits are
less than 6 dial # to assign
T is Trunk Number 1 to 8 as per
configuration
(Default check program code-07)

Default Number Assign Ringing Group 1-6

Program Dial Tone + 22 + R -- Acceptance Beep

Dial EFlexi (+ #) -- Program Dial Tone

Dial # (Erase number assigned to Ringing Group) -- Program Dial Tone

EFlexi can be 1 to 6 digits, when digits are less than 6 dial # to assign

R is Ringing Group 1 to 6

(Default check program code-07)

Default Number Assign Redial

Program Dial Tone + 23 -- Acceptance Beep

Dial EFlexi (+ #) -- Program Dial Tone

Dial # (Erase number assigned to Redial Access Code) -- Program Dial Tone

EFlexi can be 1 to 6 digits, when digits are less than 6 dial # to assign

(Default check program code-07)

Default Number Assign Call Pick-up

Program Dial Tone + 24 -- Acceptance Beep

Dial EFlexi (+ #) -- Program Dial Tone

Dial # (Erase number assigned to Call Pick-up) -- Program Dial Tone

EFlexi can be 1 to 6 digits, when digits are less than 6 dial # to assign

(Default check program code-07)

Default Number Assign Panic Code

Program Dial Tone + 25 -- Acceptance Beep

Dial EFlexi (+ #) -- Program Dial Tone

Dial # (Erase number assigned to Panic

Code) -- Program Dial Tone

EFlexi can be 1 to 6 digits, when digits are less than 6 dial # to assign

(Default check program code-07)

Default Number Assign Trunk Group-2

Program Dial Tone + 29 -- Acceptance Beep

Dial EFlexi (+ #) -- Program Dial Tone

Dial # (Erase number assigned to Trunk

Group-2) -- Program Dial Tone

EFlexi can be 1 to 6 digits, when digits are less than 6 dial # to assign

(Default check program code-07)

Extensions for Panic Alert

Program Dial Tone + 33 -- Acceptance Beep

Dial EFlexi-1 + EFlexi-2 + ... up to eight

Extensions or Flash for less -- Program Dial

Tone

(Default Not Programmed)

Security Watchdog Timing

Program Dial Tone + 34 + S -- Acceptance Beep

Where S is Security Extension ID

Programmed as per next Program

Dial Time-1 + Time-2 + ... up to eight timings or Flash -- Program Dial Tone

Where Time is HH+MM in 24 Hour Format
(Default Not Programmed)

Security Watchdog Extensions

Program Dial Tone + 35 -- Acceptance Beep

Dial EFlexi-1 + EFlexi-2 + ... up to eight Extensions or Flash for less -- Program Dial Tone

(Default Not Programmed)

Display Missed Call Alert

Program Dial Tone + 37 -- Acceptance Beep

Dial */DI + 0/1 -- Program Dial Tone

Where DI is Display ID (01-16) or * for all.

Alert Enable=1 & Disable=0

(Default Enable)

Smart Switch Access by Extension

Program Dial Tone + 38 -- Acceptance Beep

Dial */DI + *EPort / ** / EFlexi + 0/1 --

Program Dial Tone

Where,

DI is Display ID (01-16) or * for all

EPort = Extension Port Number

** = All Extensions

EFlexi = Extension Flexible Number

0 = Extension Access Disable

1 = Extension Access Enable

(Default All Disabled)

Display Smart Switch Configure

Program Dial Tone + 39 -- Acceptance Beep

Dial */DI + 0 / 1 / 2+1-5 / 3+1-5 --

Program Dial Tone

Where,

DI is Display ID (01-16) or * for all

0 is Disable

1 is Normal On/Off

2 is Door Opener and 1-4 is 2 to 10 Seconds

3 is Panic Hooter Activate and 1-4 is

16/32/48/64 Seconds & 5 is Continuous On

(Default All Disabled)

Slave System ID Set for Tie-up

Program Dial Tone + 40 -- Acceptance Beep

Dial SID – System Restart

Where,

SID is System ID from 02 to 16

Please note that for this jumper setting on CPU Card should on MSYS and in this configuration no Trunk or Hybrid Card can be placed in any system. Master system ID will be automatically 01 considered when Switcher card is placed.

Port Display Assign

Program Dial Tone + 41 -- Acceptance Beep
Dial DI + EFlexi / ** -- Program Dial Tone
Where DI is Display ID & EFlexi is Extension
Number or Ringing Group Access Code
(Default Not Programmed)

Pick-up Group Assign to Extension

Program Dial Tone + 42 -- Acceptance Beep
Dial G (Acceptance Beep) + EFlexi
(Acceptance Beep) + EFlexi (Acceptance
Beep) +.... (Flash) -- Program Dial Tone
Dial G + ** (All Extensions) -- Program Dial
Tone

Where,

G = Extension Group Number (1-8)
(Default All Extension in Group-1)

Pick-up Group Program

Program Dial Tone + 43 -- Acceptance Beep
Dial G + 1/0 -- Program Dial Tone
Where,

G = Extension Group Number (1-8)
0 = Group Pick-up Disable
1 = Group Pick-up Enable
(Default All Group Pick-up Enable)

CLID Country Digit Count (Max-15 Digits)

Program Dial Tone + 45 -- Acceptance Beep
Dial NN -- Program Dial Tone
Where NN is 01 to 15 as digit count
(Default 10 Digit Number for Country)

Ringing Group Extensions Assign

Program Dial Tone+50+RG -- Acceptance Beep
Dial EFlexi-1 + EFlexi-2 + ... up to eight Extensions or Flash for less
Where RG is Ringing Group ID from 1 to 6 -- Program Dial Tone
(Default check program code-07)

Ringing Group Day Termination

Program Dial Tone + 51 + RG -- Acceptance Beep
Where RG is Ringing Group ID from 1 to 6
Dial 1/2/3 -- Program Dial Tone
Where,
1 is Sequential Termination in Day mode for Ringing Group

2 is Simultaneous Termination in Day mode for Ringing Group
3 is Staircase Termination in Day mode for Ringing Group
(Default Sequential)

Ringing Group Night Termination

Program Dial Tone + 52 + RG -- Acceptance Beep

Where RG is Ringing Group ID from 1 to 6
Dial 1/2/3 -- Program Dial Tone

Where,

1 is Sequential Termination in Night mode for Ringing Group
2 is Simultaneous Termination in Night mode for Ringing Group
3 is Staircase Termination in Night mode for Ringing Group
(Default Sequential)

Ringing Group Delay for Staircase Termination Day Timing

Program Dial Tone + 53 + RG -- Acceptance Beep

Where RG is Ringing Group ID from 1 to 6
Dial R1 + R2 + ... + R8 or Flash -- Program Dial Tone

Where,

Rn is Ring Count Delay for Extensions as programmed by Code-51
(Default is Immediate)

Ringling Group Delay for Staircase Termination Night Timing

Program Dial Tone + 54 + RG -- Acceptance Beep

Where RG is Ringing Group ID from 1 to 6
Dial R1 + R2 + ... + R8 or Flash -- Program Dial Tone

Where,

Rn is Ring Count Delay for Extensions as programmed by Code-52
(Default is Immediate)

Auto Attendant Level-1 Termination Define

Program Dial Tone + 57 -- Acceptance Beep
Dial D + EFlexi or #+M/* or ** -- Program Dial Tone

Where,

D is Digit Dialed by Caller 0-9 or * or #
EFlexi is Extension or Ringing Group where call will terminate on dialling that number
** is to reset to default termination

#M is second level message to be played, M is message ID 0-9 as recorded by #7#11 to #7#20

#* is for replay for Level-1 message (Replay will be for once only)
(Default not programmed)

Auto Attendant Level-2 Termination

Define

Program Dial Tone + 58 -- Acceptance Beep
Dial D (L1) + D (L2) + EFlexi or # or ** --
Program Dial Tone

Where,

D (L1) is Level-1 Digit Dialed by Caller 0-9 or * or #

D (L2) is Level-2 Digit Dialed by Caller 0-9 or * or #

EFlexi is Extension or Ringing Group where call will terminate on dialling that number
** is to reset to default termination

is for replay for Level-2 message (Replay will be for once only)
(Default not programmed)

Activate Number Busy Message

Program Dial Tone + 591 -- Acceptance Beep
Dial 1/0 --- Program Dial Tone

Where,

1 = Busy message played when in dialled
Extension is busy

0 = Busy message passive
(Default Enable)

Activate Invalid Dial Message

Program Dial Tone + 592 -- Acceptance Beep
Dial 1/0 --- Program Dial Tone

Where,

1 = Invalid digit dialled message played
when in DISA Caller dials wrong digit

0 = Invalid digit dialled message passive
(Default Enable)

Activate No Dial Message

Program Dial Tone + 593 -- Acceptance Beep
Dial 1/0 --- Program Dial Tone

Where,

1 = No dial message active when in DISA
Caller dials nothing

0 = No dial message passive
(Default Enable)

Activate No Answer Message

Program Dial Tone + 594 -- Acceptance Beep
Dial 1/0 --- Program Dial Tone

Where,

1 = No answer message active when dialed
Extension does not pick-up call

0 = No answer message passive
(Default Enable)

Activate Release Message

Program Dial Tone + 595 -- Acceptance Beep

Dial 1/0 --- Program Dial Tone

Where,

1 = Release message active when Nobody pick-up call and line is released

0 = Release message passive

(Default Enable)

DISA Activation Time

Program Dial Tone + 596 -- Acceptance Beep

Dial 0-9 -- Program Dial Tone

Where,

0-9 = Time in Seconds for Line Seize on DISA Call

(Default 2 Sec)

DISA Dial Time

Program Dial Tone + 597 -- Acceptance Beep

Dial 0-9 -- Program Dial Tone

Where,

0-9 = Time in Seconds for Dialling on DISA Call after message over

(Default 6 Sec)

DISA dialled extension Ring count

Program Dial Tone + 598 -- Acceptance Beep

Dial 3-9 -- Program Dial Tone

Where,

3-9 = Ring Count in DISA Call after
Extension Dial for No Reply
(Default 7 Ring)

DISA default terminated Ring count

Program Dial Tone + 599 -- Acceptance Beep
Dial 3-9 -- Program Dial Tone

Where,

3-9 = Ring Count for DISA Fail Ringing in
(Default 7 Ring)

Trunk Line Disable Program

Program Dial Tone + 60 -- Acceptance Beep
Dial T + 1/0 --- Program Dial Tone

Where,

T = 1-8 Trunk Port ID as per System
Configuration

T = 0 All Trunk Ports

1 = Enable

0 = Disable

(Default Enable)

Trunk line Caller ID Activation Program

Program Dial Tone + 61 -- Acceptance Beep
Dial T + 0/1/2 -- Program Dial Tone

Where,

T = 1-8 Trunk Port ID as per System
Configuration

T = 0 All Trunk Ports

- 0 = Caller ID Disable
 - 1 = DTMF Caller ID Enable
 - 2 = FSK Caller ID Enable
- (Default FSK Caller ID)

Trunk Access Group Assign

Program Dial Tone + 62 -- Acceptance Beep
Dial T + 0/1/2 -- Program Dial Tone

Where,

T = 1-8 Trunk Port ID as per System

Configuration

T = 0 All Trunk Ports

0 = No Group

1 = Group '1'

2 = Group '2'

(Default All Group '1')

Note: This group lines are also used for
Global Memory Dialling

First & second group access code has to be
assigned as per program code 20 & 29
respectively.

Trunk direct access code has to be assigned
as per program code 21

Trunk Line Termination Day Mode

Ringin Extension Assignment

Program Dial Tone + 63 -- Acceptance Beep
Dial T + EFlexi -- Program Dial Tone

Where,

T = 1-8 Trunk Port ID as per System Configuration

T = 0 All Trunk Ports

EFlexi is Extension or Ringing Group where call will terminate on dialling that number (Default first EPort)

Trunk Line DISA/AA Activation - Day Mode Assignment

Program Dial Tone + 64 -- Acceptance Beep

Dial T + D (0-6) -- Program Dial Tone

Where,

T = 1-8 Trunk Port ID as per System Configuration

T = 0 All Trunk Ports

D = 0 - DISA disable & normal termination as per program code 63

D = 1-5 - DISA enable & message 1-5 will be played

D = 6 - DISA enable without Voice prompt (Default All DISA disable)

Configure DISA Welcome Message action for Trunk Day Mode

Program Dial Tone + 65 -- Acceptance Beep

Dial T + 0/1/2/3 --- Program Dial Tone

Where,

T = 1-8 Trunk Port ID as per System Configuration

T = 0 All Trunk Ports

0 = DISA Normal Dialling is enabled

1 = DISA Dialling is must or Line will be released after DISA dial time

2 = DISA Dialling is disabled and Line will be released after DISA message is over

3 = DISA Dialling is disabled and Line will be terminated as per configuration

(Default DISA Dialling Enable)

Trunk line Telephone number

Assignment

Program Dial Tone + 66 -- Acceptance Beep

Dial T + NNNNN (Telephone Number - max. 12 Digits) -- Flash

Where,

T = 1-8 Trunk Port ID as per System

Configuration

NNNNN = Telephone Number of trunk line - max. 12 Digits

(Default not programmed & 'Phonomax PBX' will be displayed)

Trunk Line Termination Night Mode

Ringing Extension Assignment

Program Dial Tone + 67 -- Acceptance Beep

Same as Day Mode Setting program code-63

Trunk Line DISA/AA Activation - Night Mode Assignment

Program Dial Tone + 68 -- Acceptance Beep
Same as Day Mode Setting program code-64

Configure DISA Welcome Message action for Trunk Night Mode

Program Dial Tone + 69 -- Acceptance Beep
Same as Day Mode Setting program code-65

Extension Group Trunk Access Day Mode

Program Dial Tone + 71 -- Acceptance Beep
Dial EFlexi /** + T + 1/0 --- Program Dial
Tone

Where,

EFlexi is flexible number assigned to
extension

** is all extension

T = 1-8 Trunk Port ID as per System
Configuration

T = 0 All Trunk Ports

0 = Disable Access

1 = Enable Access

(Default All Allowed)

Note: This Access is applicable for both
groups, if activated

Extension Trunk line Direct Access Day Mode

Program Dial Tone + 72 -- Acceptance Beep
Dial EFlexi /** + T + 1/0 --- Program Dial
Tone

Where,

EFlexi is flexible number assigned to
extension

** is all extension

T = 1-8 Trunk Port ID as per System
Configuration

T = 0 All Trunk Ports

0 = Disable Access

1 = Enable Access

(Default All Allowed)

Extension Class of Service Day Mode

Program Dial Tone + 73 -- Acceptance Beep
Dial EFlexi /** + 0/1/2/3 --- Program Dial
Tone

Where,

EFlexi is flexible number assigned to
extension

** is all extension

0 = All Allowed

1 = Class of Service - 1 Effective (Allowed All
20/Denied First 10)

2 = Class of Service - 2 Effective (Allowed
First 10/Denied All 20)

3 = Only Intercom Allowed
(Default All Allowed)

Extension Group Trunk Access Night Mode

Program Dial Tone + 74 -- Acceptance Beep
Same as Day Mode Setting program code-71

Extension Trunk line Direct Access Night Mode

Program Dial Tone + 75 -- Acceptance Beep
Same as Day Mode Setting program code-72

Extension Class of Service Night Mode

Program Dial Tone + 76 -- Acceptance Beep
Same as Day Mode Setting program code-73

Class of Service Denied Table Program

Program Dial Tone + 77 -- Acceptance Beep
Dial CC + NNNNN --- Program Dial Tone

Where,

C = 00-19 Code Location Number

C = * Erase Table

NNNNN = Denied Station Starting Area Code

max. 5 Digits

(Default Not Programmed)

Class of Service Allowed Table Program

Program Dial Tone + 78 -- Acceptance Beep

Dial CC + NNNNNNNNN --- Program Dial

Tone

Where,

C = 00-19 Code Location Number

C = * Erase Table

NN___ = Allowed Station Starting Area Code

max. 9 Digits

(Default Not Programmed)

Exit from Programming Mode

Program Dial Tone + 90 -- System Normal

Dial Tone

Note: After Programming over System will
Back-up all Programmed data & Run LED will
be on intermittently. Do not switch off
system till run LED runs normally.

Extension Data Reset

Program Dial Tone + 94 -- Acceptance Beep

Dial EFlexi + # -- Program Dial Tone

Where,

EFlexi is flexible number assigned to
extension

Note: This will also erase Flexible number
assigned to extension

Trunk Data Reset

Program Dial Tone + 95 -- Acceptance Beep

Dial T + # -- Program Dial Tone

Where,

T = 1-8 Trunk Port ID as per System

Configuration

Note: This will also erase Flexible number assigned to trunk direct access code

Manager Password Reset Program

Program Dial Tone + 97 -- Acceptance Beep

Dial # -- Program Dial Tone

(Default Manager Password is reset as '****')

Data Reset Memory & Back-up

Program Dial Tone + 98 -- Acceptance Beep

Dial # -- Blank and System Normal Dial Tone

Note: Program will get to factory default.

Data Reset Memory Only

Program Dial Tone + 99 -- Acceptance Beep

Dial # -- Blank and System Normal Dial Tone

Note: Program will get restored from Back-up automatically and SMDR Log will also get erased.

Identify Jack/Port & Flexible Number Assigned to extension

To find Jack or Port number, Lift Handset dial #2* without program password, Voice message of Jack number will be announced.

To find Flexible number, Lift Handset dial #2* without program password, Voice message of Flexible number will be announced, if assigned.

Note: